

## Important notice on lithium ion battery

- 1) Charge the battery only with original urovo power adaptor supplied in the box
- 2) Do not store the device with battery installed for long period of time
- 3) If long period storage is required, remove battery from device.
- 4) During long storage period, maintenance work is required at every 3 months period. During maintenance, discharge the battery completely, and then charge to 60% – 70% (or 3.8V – 3.9V).
- 5) Store battery in dry, cool environment. Temperature should be – 20 to 40 degree Celsius and relative humidity should be 45% to 85%
- 6) Charge battery at 5 to 45 degree Celsius
- 7) Do not operate the device outside the recommended temperature, which is from –20 to 60.
- 8) Do not install a third party battery into Urovo device

## Safety precaution

- 1) Do not transport the battery at temperature higher than 65 degree Celsius
- 2) Do not expose battery to fire or heat source
- 3) Do not forcefully install the battery in opposite direction into the device
- 4) Avoid impact and high vibration force on the battery
- 5) Keep battery dry at all time
- 6) Do not use battery that is damaged or appear to have been modified
- 7) Do not use unauthorized power adaptor to charge the battery
- 8) Do not discharge the battery beyond the specification of the battery
- 9) Do not place battery into microwave oven or pressured container
- 10) Do not damage battery with sharp objects
- 11) Do not operate in environment with extreme electrostatic fields or magnetic fields.
- 12) If leakage found in battery, avoid contact with body parts. Should leakage be in contact with body parts, flush with water and immediately seek medical attention
- 13) If battery exhibits unusual behavior like color change, temperature became hot, shape is swollen, remove battery from device and stop using that battery
- 14) If the contact point on the battery is dirty, clean with a dry cloth
- 15) Dispose the battery according local regulation. Recycle if possible.
- 16) Improper usage or storage may cause battery performance to drop, leak, damage, or even escalate to personal safety issue.



V5100 User Guide

## Appearance and Buttons

### Front view



**Cold Boot:** Press and hold down Fn, use the stylus to click the reset hole, and then release the hole simultaneously.

**To turn on:** Hold power button until device switches on

**To turn off:** Hold power button until the device screen shows the power off menu. Select shutdown on the menu.

**Sleep:** Under operation mode, press the power button once

**Wake up:** Press power button once

### Side view



### Rear view



UHF and Handle  
Can be removed



### Battery Installation

Insert the battery into the battery compartment as shown in the picture. Battery should sit tightly in the compartment when correctly installed. Do not apply excessive force when inserting the battery.



### Battery charging instructions

#### Charging using power adaptor

Connect the USB cable into the device and the power adaptor. Red LED indicates charging and Green LED indicates fully charge.



USB Data cable



Power adaptor

#### Charging using cradle



C Indicator  
P Indicator



Battery slot  
Terminal slot



Power adaptor

P: Power Indicator  
C: Charge status Indicator

Connect the power cable into the cradle.  
P LED indicates the cradle is operational.  
Slot the device into the cradle and take note of the LED change on the device which indicate the charging process  
Slot the battery into the cradle as shown in the picture.

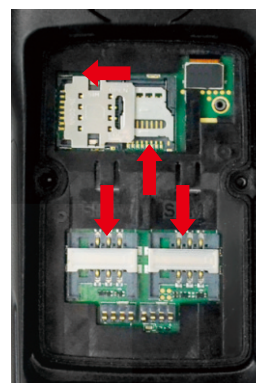
C LED should light up to indicate charging.

### Battery Operation



The device battery is polymer type battery, which should only be charged by using original Urovo power supply.  
Metal contact is unavailable or artificial short circuit electrode.  
Do not store battery in hot, humid, or corrosive environment.  
Do not break or crack battery.  
Do not store battery when it is fully charged completely drained.  
If device is not used for long period of time, remove the battery from the device, please.  
If the battery is misshapen or is found leaking, replace the battery immediately.  
Note: The battery should be charged for at least 8 hours before the first use.

### Installing SIM/ TF Card



1.Swing open the main battery cover clip by 90 degrees, you can then remove the battery cover.  
2.Insert the SIM card or Micro SD/TF card into their corresponding slots in the battery compartment.  
Note: You should gently push the SIM/TF card to the correct position without using excessive force.

### Connecting to PC

When installing updates such as Microsoft ActiveSync 4.5 (Windows 2000/XP/2003) or Windows Mobile Device Center 6.1 (Windows Vista/2008/7), you can do so by connecting a data cable between the V5 terminal and a personal computer. Downloads are available from the Microsoft website.  
After the installation of Microsoft ActiveSync, connects the device to the PC with the USB cable, which packaged with, connect one end to the PC, and the other end to the device. Afterward the PC should prompt up with the following screen:

Click” Browse” , you can enter the storage space of the handheld device, for normal operation.  
Note: If no connection is successfully established, you can restart the handheld device reconnection or re-plug the USB cable.

